

Preface

It is a rare event in a city’s lifetime that **Nature and City** can be linked to compose a new and central national public venue. The Ramat Gan Stadium’s unique site is situated on the meeting point of the region’s most beautiful and unique metropolitan green Park, and the intensively developing edge of the urban fabric. This co-existence, of nature and city can become a powerful engine for Ramat Gan and its neighboring cities, a special opportunity to create an all year round social and cultural new beating heart not only for football lovers but for all residents of the central metropolitan area of Israel.

This proposal suggests to lever up the project of the Israel National Stadium compound to become an exceptional urban joint, not only of Park and City, but foremost to become the meeting point of people, of diverse activities, festivities, unique events as well as of everyday moments. A place where people from for all walks of life can enjoy nature while in the city, a place of leisure, of sports activities, of social interaction, a place to celebrate freedom and construct a new local public culture of sports and leisurein the city.

The new iconic Stadium building is inspired from its unique location and designed as a simple elegant shape which is cladde by natural wooden materials to integrate harmoniously with its neighboring Park and provide a beautiful new silhouettein the Ramat Gan sky line. The large elevated podium surrounding the Stadium will add another level of public space and provide a special spatial experience for the massive crowd of the matches. The Stadium’s orientation which is both outside in and inside out offers the highest end of football experience to the spectators along with 3600 active building envelope with retail and leisure and cultural facilities for the general public.

The new National Stadium in Ramat Gan is proposing a new landmark football Stadium along with a vibrant public sphere that will serve the Ramat Gan wellers, all its neighboring cities and effectively become a major Israeli iconic venue for locals, visitors and tourists alike.



Context

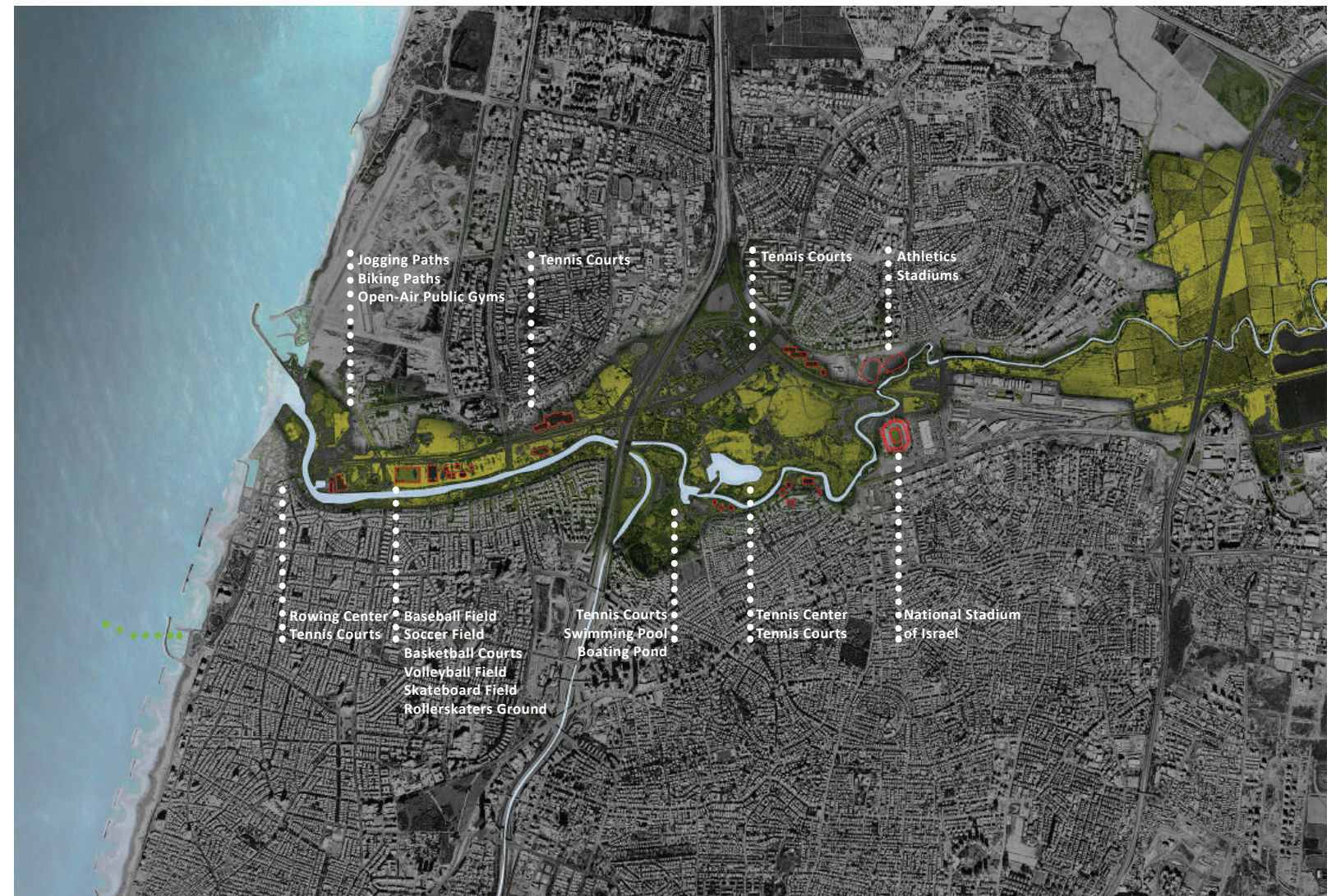
The City and the Park

The urban fabric surrounding the proposed National Stadium is characterized by rapid growth.

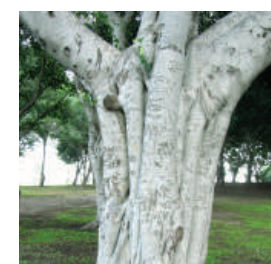
Both cities of Ramat Gan and Bnei-Brak, are renewing their old neighborhoods and buildings, constructing high density and high rise towers, mostly for business retail and offices. These new conditions, along with the growing demand for public spaces and growing use of the **unique Park** area adjacent to the urban fabric, requires a thoughtful and creative design approach regarding the best utilization of the compound's public land.

As a response to the height of the surrounding buildings that grows higher and takes advantage of the breathtaking Park and sea views, the compound's public open areas are suggested to be developed intensively and with specificity, to allow the vital balance between varying masses of users all year round, and the high quality design of public spaces and street level activities.

Growing from these challenges, the proposed Stadium compound attempts to **diffuse and blend** city edge with Park, proposing residential towers on the urban edge of the city and a unique new form of 'inside-out' Stadium, facing its surrounding public space and piazzas with leisure and retail areas which overlook the Park and make it more accessible to the general public.



Green Areas and Sports Facilities



Images of Yarkon Park

Green
Analysis - Image

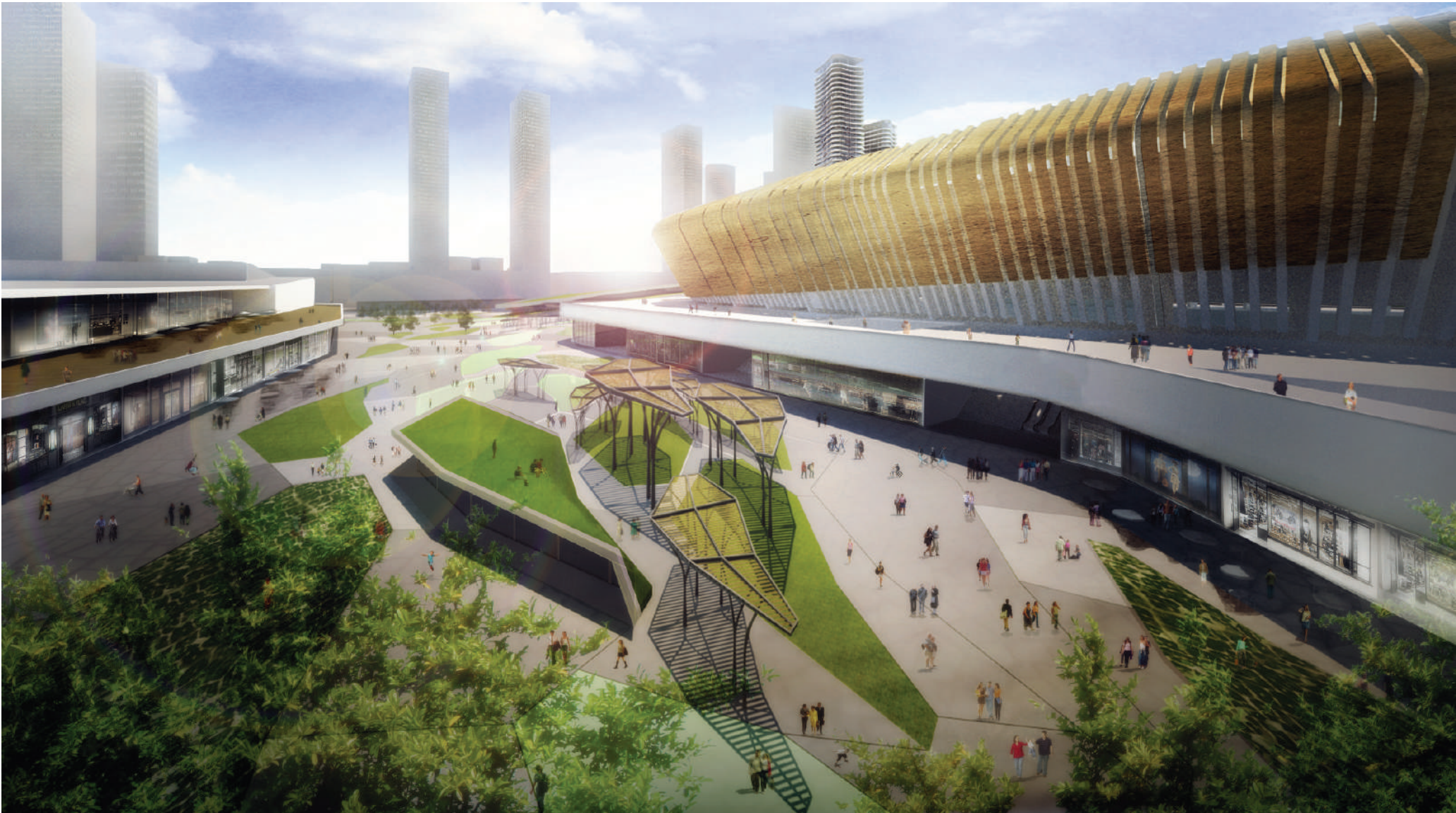
Public & Green

The meeting between the Park’s rich all year round green, with the rapid growing urban fabric, has led the need to **diffuse the Park into the city**. Careful examination of local vegetation and the phenomena of the green coating that is covering the natural Park areas with a thick layer of eucalyptus trees leaves, grew into the distinctive design language of the new constructed landscapes around the Stadium. Stemming from this observation, the infiltration of the Park’s green carpet into the new Stadium and existing city, had become the theme of the project’s landscape.

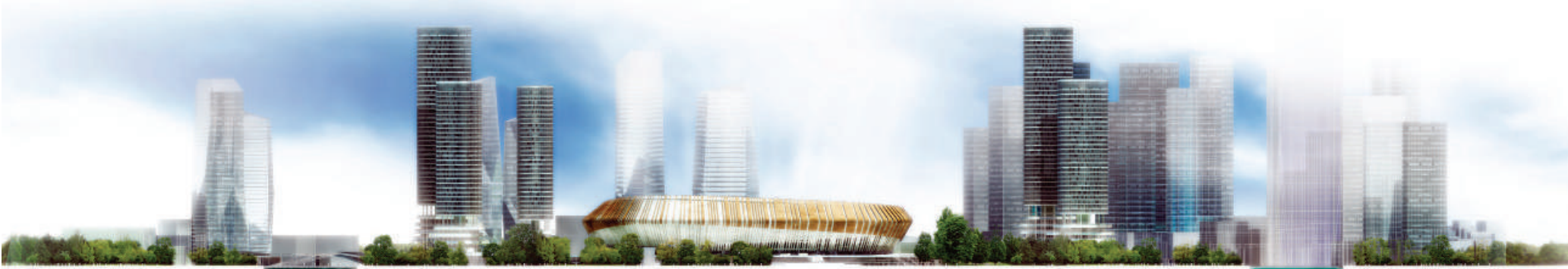
Hence, the patterns of the leaves had covered the ground to blend into the city, as fallen leaves lay on the ground, forming a huge distinctive urban carpet and a background to the Central Piece - the Stadium. Along with the unique landscape experienced by pedestrians, the revealed image from the bordering towers of the new compound, where the smooth and organic shape of the Stadium, laid upon a mat of leaves, would be a delightful sight and a strong urban image.

The **Yarkon Park** is a unique phenomena in the dense environment of Dan district. It is so, not only by its evergreen river and the outstanding nature preserved, but also due to the fact that it is the only and unprecedented green ‘lung’ of the metropolis.

The outstanding piece of nature, at the heart of the most densely populated area in Israel is drawing visitors and users from the whole region and from all over Israel. With its attractions, sports facilities, and natural preserved corners, it is much loved and intensively used by all walks of life, whether by daily joggers, cyclists, Yoga classes, Tai Chi groups, families, schools or simply nature lovers.



East Plaza - A mat of leaves covered the ground to blend into the city



West Elevation - Visibility of the project from the Park

Green

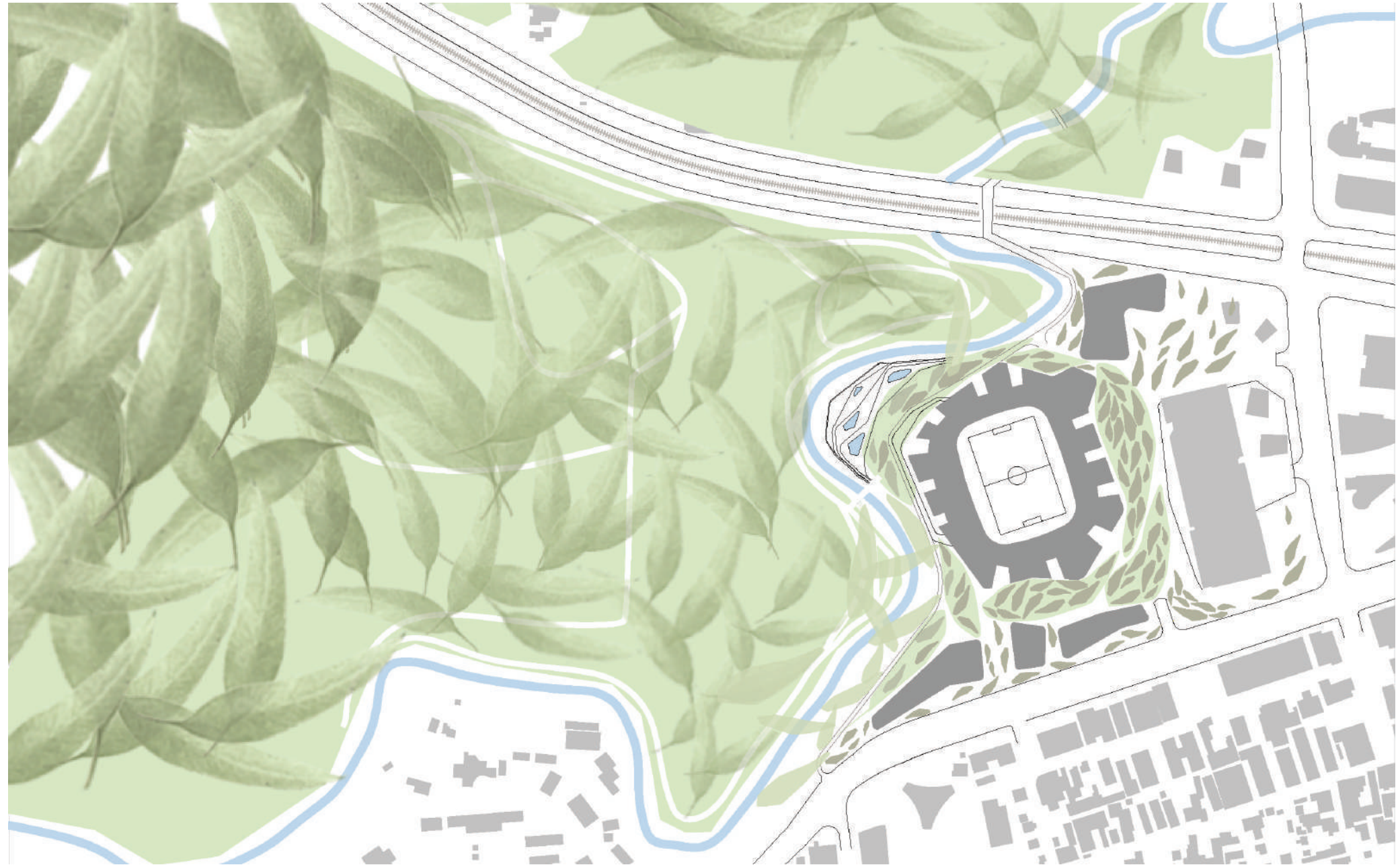
The Eucalyptus Green Leaves

It is because of the immense importance of Yarkon Park that this team had chosen to study, research and adapt, some of the Park's phenomena.

From the studies and observations of the site and its surroundings, emerged the all too familiar **Eucalyptus** tree, in its outstanding dimensions and stability, deeply rooted in the wet soil and the water of the river, moving slowly and elegantly in the wind. It's curved and smooth branches, are covered with curvy clots of leaves, making a calm sound of hash, with every wind. It was the Eucalyptus that caught our attention with its dimensions, and its ability to absorb the city, the river, the soil.

Suddenly, the tree was evident everywhere, not only on the river banks, or the Park, the Eucalyptus was all around the city, giving light shadow with a shimmering light through its leaves.

Through studies and research of the Eucalyptus's typical typology, a language of various forms had developed to form a large index of borrowed **architectural elements**, such as the pedestrian's tiled piazzas, sidewalks and paths, shading pergolas, elevated Parking exits, vegetation areas etc.



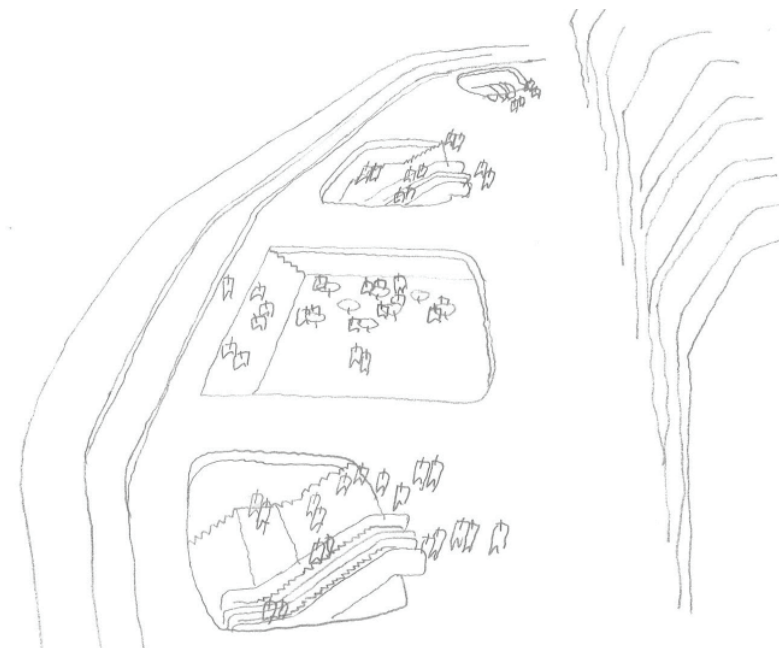
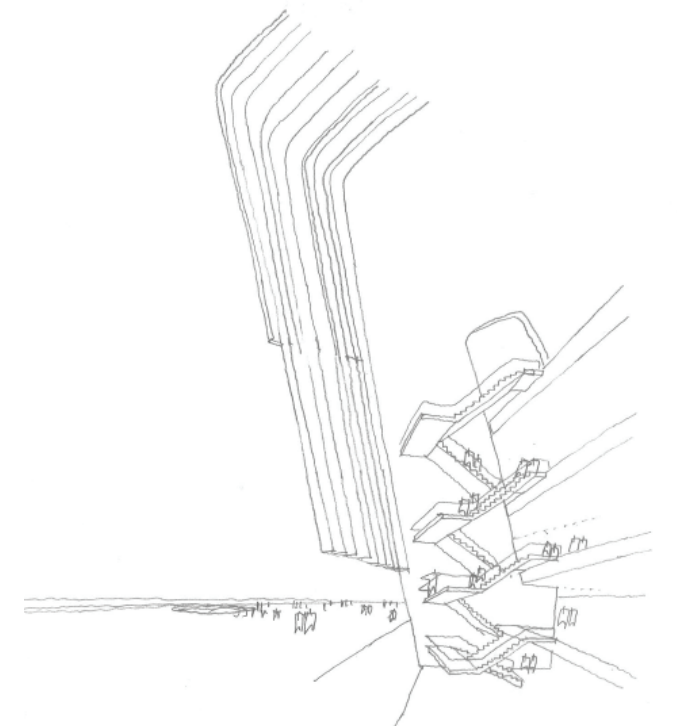
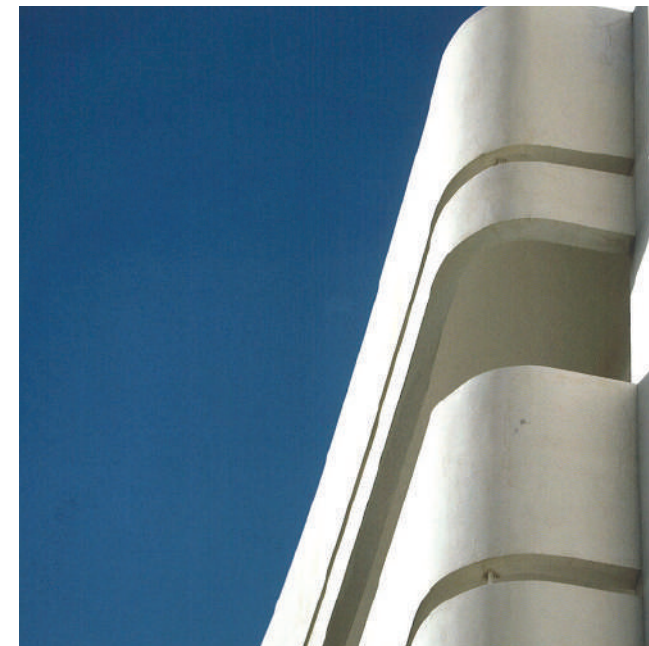
Green penetrating the City



The *White City* is an important reference that influenced the conception and architectural formalization of our proposal.

The National Stadium architecture seeks to link with the roots of the heritage of the International Style and the Bauhaus.

The architecture of the early White City is reborn. Based on its past comes a renewed look to the future. The geometry and forms outlined in our proposal regenerates the original spirit of the Bauhaus. What was born in the generation of our grandparents, comes to suit our time, changes and enables new approaches that allow a step forward.



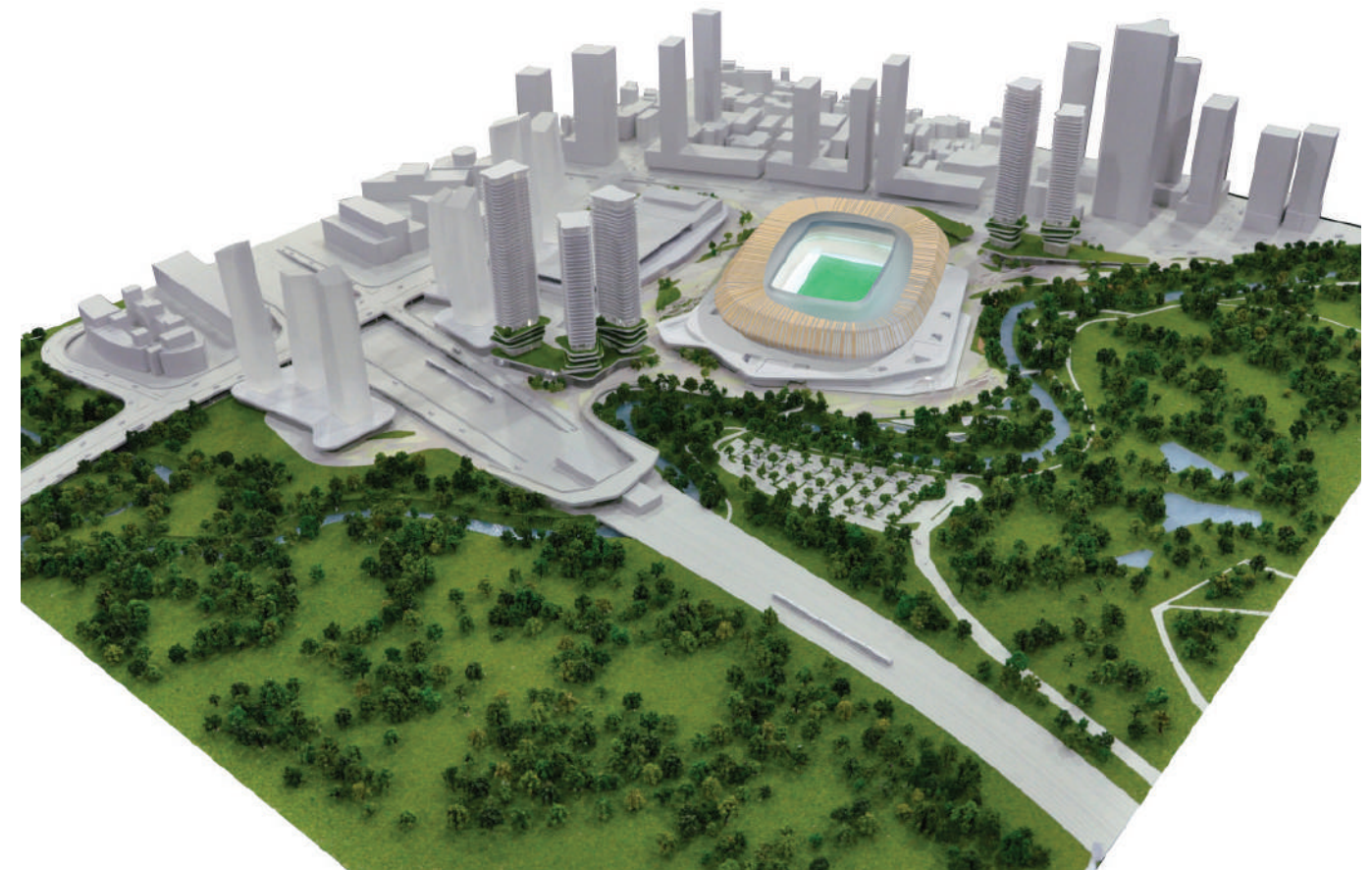
As a fundamental principle of the urban scheme lies the idea of seamless connection with the various existing fabrics around it.

1. The Street – The project suggests a vivid façade facing Sheshet Hayamim Street, with commerce, housing and wide passages into the Stadium Piazza.

2. Ayalon Shopping Mall – It is proposed to create a large communal piazza connecting the new Stadium east commercial spaces with Ayalon Shopping Mall on the east edge of the compound. The existing mall could be extended and open its façade towards the new Stadium and renew its face thus improve the commercial attraction of the old mall.

3. The Park- With the new proposed Footbridges, a new Promenade along a commercial façade devoted to food and beverage, and the future removal of the Electric Transformation plant - the Park's new east bank will become an accessible and vital route for all users, whether for daily use, or in the case of special events in the Stadium.

4. The Housing- The existing new housing towers on Aba Hillel Silver Street will be strengthened by the proposed new 330 flats in the two adjacent towers. Since the new towers contain facilities in their lower levels for the benefit of the dwellers, such as gym, spa, assembly hall and more, it is expected that a sense of community of all neighboring housing on the Yarkon River will take place.



Housing on the City Edge

The choice of placing 5 residential towers on two individual plots was made as a response to the following rationales:

1. Balance of uses:

The current area uses characterized by a domination of commerce and offices, may lead to single and imbalanced day use and low level of public activities.

2. A critical mass of housing:

The possibility to create a critical mass of housing containing over 800 flats ensure a lively and desired housing environment.

3. Simple division of public and private:

The geographical nature and geometry allows the division of the large plot into 3 separate and independent plots – a public one, for the Stadium and 2 private plots for the housing, all enjoying complete independence.

4. The saturation of office market:

The current prediction for low market demands and low values of office spaces in the next decade in the Dan region.

5. The growing demand for housing:

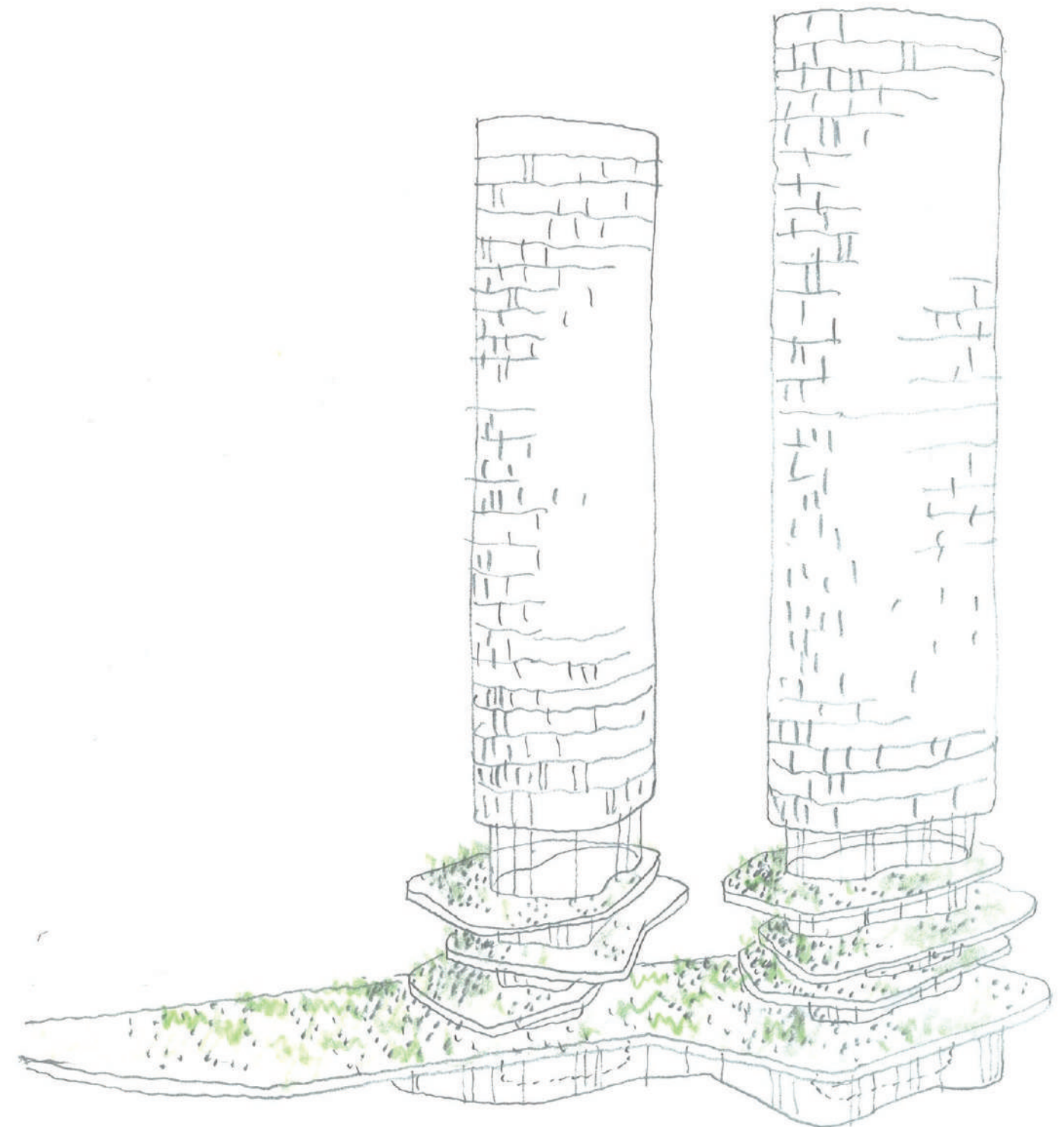
It is predicted that in the foreseen future the demand for housing units in the area, especially in the case of unique towers on the verge of the Park will continue to grow.

6. A Special type of housing:

It is a rare opportunity to create a unique type of housing, enjoying a central location and vivid city life, on the one hand, and a calm and peaceful Park on the other.

7. Economical Values and public project financing:

Following the above, the high economic values of such towers and the ability to fund the public project with the expected income from marketing the plots of the housing to the private sector.



Toner

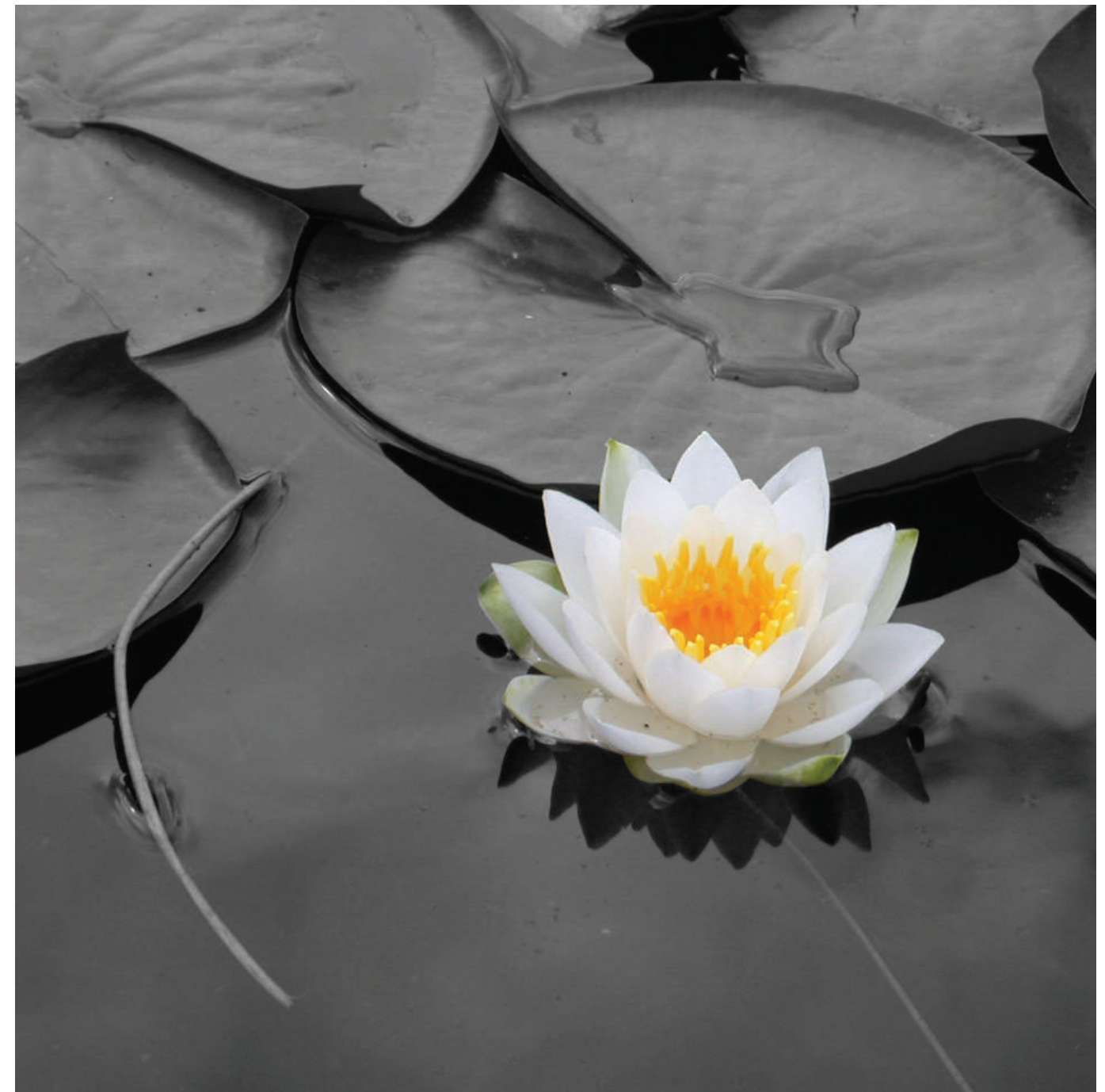
The Stadium

The site of the Stadium in Ramat Gan, along the banks of the Yarkon River, gives us the opportunity to extend the area of this park to the public space. The vegetation and organic forms are deployed, occupying and giving shape to the new urban spaces.

The National Stadium requires around it a wide area of movement for the public who comes to the events. This space is not planned as an extension of the city, but rather as an extension of the Park. Therefore, **the Stadium is conceived as an inserted element in the natural environment.**

The strategy of the entire landscape intervention seeks to resemble the simplicity of a *flower and fallen leaves*, floating on calm waters.

And the **Stadium** is like a flower with its petals open in a welcoming gesture.



The Façade

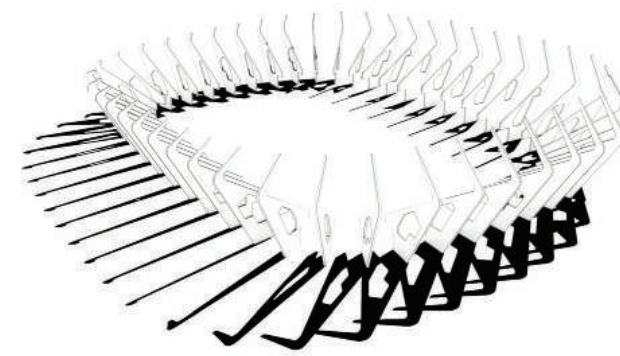
The envelope of the façade and roof are shaped as added layers and as overlapping veils. They will be formed by the sum of several skins that control views, natural ventilation, waterproofing, shading and acoustics.

Arranged between the concrete structural ribs are the GRC elements of lightweight concrete. They begin to protect the inside from the views, allow the passage of wind and protect from direct sunlight and rain. Creating a beautiful play of light and shadow.

A PTFE textile translucent membrane slides from the inside of the cover between the ribs, letting nuanced light to pass inside.

During night time, a good support for video projections, lighting and performances will be facing the park to create a relationship between the public, nature and contemporary technology.

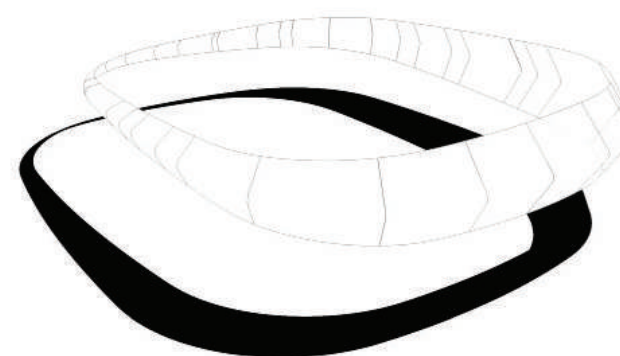
The most outer layer consists of laminated woodslats, protecting the interior layers. This unique cover, which will give the appearance and image of the Stadium, and will be made from natural material, will have a softening visual effect, acting as a reference to the Park's environment and the Eucalyptus trees, and act as a reflection of the surrounding nature to the west. This layer system, with its ability to change its density and opacity, depending on the orientation, will be denser when facing the city, and lighter towards the park, from where pleasant cooler west wind blow at the hot summer afternoons.



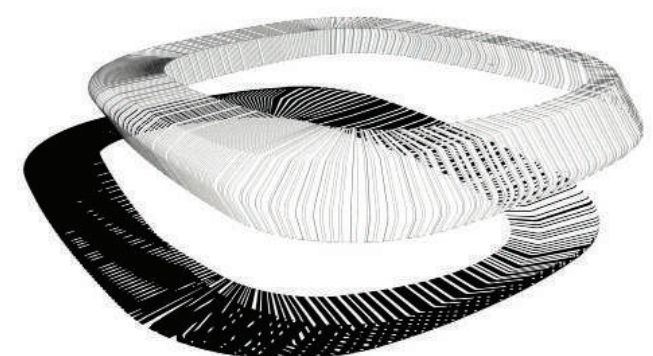
Concrete White Fins



GRC White Louvers



Membrane



Timber fins

The design of the stadium and the organization of surrounding platforms seek to adapt and perform other activities besides football. The main objective is flexibility and adaptability.

Around the stadium have been created spaces that allow different uses related to leisure and entertainment. To achieve this, the entire necessary support infrastructure is provided to let accessibility of people, vehicles and cargo. The spaces that are visually seen in the outer volumes can function because of the inner resources which are not seen under the platforms.

Events for the big public, other than football, such as concerts or major cultural events can be housed inside the stadium. But, for smaller groups, in outdoor space platforms can hold fashion shows, presentations, drama, film screenings, concerts...



Events - Fashion Show